

KCC MERCHANDISE PLAYING KIT GUIDE

WOMENS


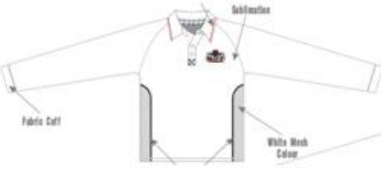

 <p>Black Piping Cut & view (Colour)</p> <p>Back Long Front</p>	 <p>Black Piping Cut & view (Colour)</p> <p>Back Long Front</p>	 <p>FRONT BACK</p>
<p>SHORT SLEEVE SHIRT</p>	<p>LONG SLEEVE SHIRT</p>	<p>BLACK PANTS</p>

MENS

1st, 2nd & 3rd XI One Day White Ball Matches

 <p>Black Piping Cut & view (Colour)</p> <p>Back Long Front</p>	 <p>Black Piping Cut & view (Colour)</p> <p>Back Long Front</p>	 <p>FRONT BACK</p>
<p>SHORT SLEEVE SHIRT</p>	<p>LONG SLEEVE SHIRT</p>	<p>BLACK PANTS</p>

1st, 2nd & 3rd XI Two Day Red Ball Matches and remaining other grades (4th to 6th XI) for One Day and Two Day matches

 <p>White Coll</p>	 <p>Coll/Buttons Fabric Coll White Mesh Collar</p>	 <p>FRONT BACK</p>
<p>SHORT SLEEVE WHITE SHIRT</p>	<p>LONG SLEEVE WHITE SHIRT</p>	<p>WHITE PANTS</p>

JUNIORS

 <p>Black Piping Cut & view (Colour)</p> <p>Back Long Front</p>	 <p>Black Piping Cut & view (Colour)</p> <p>Back Long Front</p>	 <p>FRONT BACK</p>
<p>SHORT SLEEVE SHIRT</p>	<p>LONG SLEEVE SHIRT</p>	<p>WHITE PANTS</p>

PLAYING SHIRT SIZING

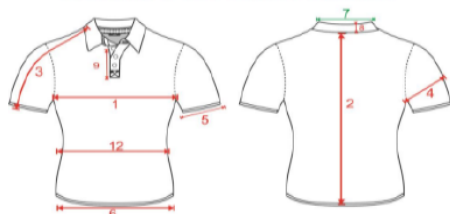
MENS & JUNIOR SIZING

(MEN SIZINGS)		Polo Shirt Sublimation (Icon Group) : Updated : (1st July, 2019)																	
Sr #	MEASUREMENTS GIVEN IN CENTIMETERS	2	4	6	8	10	12	14	16	S	M	L	XL	2XL	3XL	4XL	5XL	6XL	7XL
1	CHEST	38	40	42	44	46	48	50	52	54	56	60	62	64	66	68	70	72	74
2	BACK LENGTH	48	51	54	57	60	63	66	69	71	73	76	79	81	83	85	87	89	91
3	HPS SLEEVE LENGTH	24.5	26	27.5	29	30.5	32	33.5	35	36.5	38	40	42	44	46	48	50	52	54
4	ARM HOLE	14	15	16	17	18	19	20	21	22	23	24	25	26	27	28	29	30	31
5	CUFF OPENING	9	10	11	12	13	14	15	16	17	18	19	20	21	22	23	24	25	25
6	BOTTOM	38	40	42	44	46	48	50	52	54	56	60	62	64	66	68	70	72	74
7	FULL SLEEVE LENGTH	56	58	60	62	64	66	68	70	72	74	77	79	81	83	85	87	89	91
8	FULL SLEEVE CUFF OPENING	9	9.5	10	10.5	11	11.5	12	12.5	13	13.5	14	14.5	15	15.5	16	16.5	17	17.5
9	COLLAR LENGTH	29	31	33	35	37	39	41	43	45	47	49	51	53	55	57	59	61	63
10	COLLAR HEIGHT	7.5	7.5	7.5	8	8	8	8	9	9	9	9	9	9	9.5	9.5	9.5	9.5	10
11	PLACKET	13	13	16	16	16	16	16	18	18	18	18	18	18	18	18	28	20	20
12	FULL HPS SLEEVE	52	56	60	62	65	68	71	75	77	79	82	84	86	88	90	92	94	96

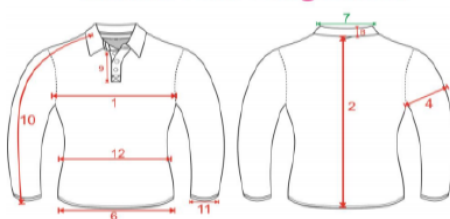
WOMENS SIZING

"WOMENS POLO SHIRT SIZE CHART" - PRO FIT CUT & SEW + SUBLIMATION															
PATTERN CODE:-		STYLE NO:-		Creation Date:- 31-Aug-2019				Approved Dated:- 29-Oct-2019							
S.NO	Measurements Points	4XS	3XS	4/2XS	6/XS	8/S	10/M	12/L	14/XL	16/2XL	18/3XL	20/4XL	22/5XL	24/6XL	TOL +/-
1	CHEST	38	40	42	44	46	48	50	52	54	56	58	60	62	1.25
2	BACK LENGTH	52	54	56	58	60	62	64	66	68	70	72	74	76	1.5
3	SLEEVE LENGTH	23	24	25	26	27	29	31	33	34.5	35	35.5	36	36.5	1
4	ARM HOLE	14	15	16	17	18	19	20	21	22	23	24	25	26	0.75
5	CUFF OPENING	12	12.5	13	14	15	16	17	17	18	18	19	20	21	0.5
6	BOTTOM	40	42	44	46	48	50	52	54	56	58	60	62	64	1.25
7	COLLAR LENGTH	32	34	36	38	40	42	44	46	48	50	52	54	56	1.25
8	COLLAR HIGHT CENTER	6.5	6.5	6.5	6.5	7	7	7	7	7	7	7	7	7	0.25
9	PLACKET	16	16	17	17	17	18	18	18	18	18	20	20	20	0.5
10	FULL SLEEVE LENGTH	54	58	62	66	70	72	74	76	77.5	78	78.5	79	79.5	1.5
11	SLEEVE OPENING	8.5	9	9.5	10	10.5	11	11.5	12	12.5	12.75	13	13	13	0.5
12	WAIST	34	36	38	40	42	44	46	48	50	52	54	56	58	1

Women Polo Short Sleeve



Women Polo Long Sleeve



NOTES	
A	All the measurements are in centimeters.
B	Sizing base followed by us what we use in ICON Staff order(Promo # 26) POLOS.
C	
D	

SPECIAL INSTRUCTIONS	
30-Aug	2XL to 6XL sleeve will remain same in length.

PLAYING PANTS SIZING

JUNIORS/MENS

PANT SIZE CHART - Cut n Sew																	
Sr #	MEASUREMENTS GIVEN IN CENTIMETERS	4	6	8	10	12	14	16	S	M	L	XL	2XL	3XL	4XL	5XL	6XL
1	WAIST	23	25	27	29	31	33	36	38	40	42	44	46	48	50	52	54
2	HIP	37	39	42	45	48	50	53	55	57	59	61	63	65	67	69	71
3	THIGH	24.5	25.5	27	28.5	30	31	33	34	35	36	37	38	39	40	41	42
4	LENGTH	70	75	80	85	90	95	100	103	106	109	112	115	118	121	124	127
5	IN SEEM	51	55	59	63	67	71	75	77	79	81	83	85	87	89	91	93
6	FRONT RISE	23	24	25	26	27	28	29	33	34	35	36	37	38	39	40	41
7	BACK RISE	31	32	33	34	35	36	37	41	42	43	44	45	46	47	48	49
8	BOTTOM	14	15	16	17	18	19	20	21	22	23	24	25	26	27	28	29
9	POCKET	14	14	14	16	16	16	17	17	18	18	18	19	19	20	20	20

WOMENS

CRICKET PANT - (Final checked & approved by EDDIE)												
GENDER: WOMENS			VERIFIED BY: EDDIE				PATTERN CODE:			DATED:		
This Size Chart Is Valid For: CP1, CP1PRO, CP1SUBCLUB												
Sr #	MEASUREMENTS IN CENTIMETERS	W6	W8	W10	W12	W14	W16	W18	W20	W22	W24	W26
1	WAIST	31	33	35	37	39	41	43	45	47	49	51
2	HIP	46	48	50	52	54	56	58	60	62	64	66
3	THIGH	30	31	32	33	34	35	36	37	38	39	40
4	LENGTH	94	96	100	103	105	107	109	111	113	115	117
5	FRONT RISE	25	26	27	28	29	30	31	32	33	34	35
6	BACK RISE	36	37	38	39	40	41	42	43	44	45	46
7	BOTTOM (Leg Opening)	16	17	18	19	20	20.5	21	21.5	22	22	22

HOODIE SIZING

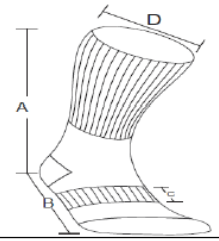
GENDER: MENS		VERIFIED BY: EDDIE				PATTERN CODE:			DATED: 21-Aug-2020			
This Size Chart Is Valid For: All Hoodies & Crew Neck												
Sr #	MEASUREMENTS IN CENTIMETERS	XS/16	S	M	L	XL	2XL	3XL	4XL	5XL	6XL	7XL
1	BACK LENGTH	68	70	72	74	76	78	80	82	84	86	88
2	CHEST	54	56	58	60	62	64	66	68	70	72	74
3	SLEEVE LENGTH (HPS)	75	77	79	81	83	83	83.7	84.1	84.9	85.3	86
4	ARM HOLE	21	22	23	24	25	26	27	28	29	30	31
5	BOTTOM (OPENING) RIB BELT	45	47	49	51	53	55	57	59	61	62	63
6	CUFF (OPENING)	10.5	11	11.5	12	12.5	12.5	13	13.5	14	14.5	15
7	BOTTOM RIB HEIGHT	6.5	6.5	6.5	6.5	6.5	6.5	6.5	6.5	6.5	7	7
8	HOOD LENGTH	35	36	37	38	38	39	39	40	40	40	40
9	HOOD WIDTH	26	27	28	29	30	30	31	31	32	32	32
10	RIB + FABRIC BELT (OPENING)	49.5	51.5	53.5	55.5	57.5	59.5	61.5	63.5	65.5	67.5	69
GENDER: WOMENS		VERIFIED BY: EDDIE				PATTERN CODE:			DATED: 21-Aug-2020			
Sr #	MEASUREMENTS IN CENTIMETERS	W6	W8	W10	W12	W14	W16	W18	W20	W22	W24	W26
1	BACK LENGTH	63	65	67	70	73	76	79	82	85	87	
2	CHEST	50	52	54	57	60	63	66	69	72	75	
3	SLEEVE LENGTH (HPS)	72	75	78	81	84	85	85.7	86.5	87.3	88	
4	ARM HOLE	19	20	21	22	23	24	25	26	27	28	
5	BOTTOM (OPENING) RIB BELT	41	43	45	48	51	54	57	60	63	66	
6	CUFF (OPENING)	8.5	9	9.5	10	10.5	11	11.5	12	12.5	12.5	
7	BOTTOM RIB HEIGHT	6.5	6.5	6.5	6.5	7	7	7	7	7	7	
8	HOOD LENGTH	40	40	41	41	42	42	43	43	44	44	
9	HOOD WIDTH	26	26	27	27	28	28	29	29	30	30	
10	RIB + FABRIC BELT (OPENING)	48	50	52	55	58	61	64	67	70	73	
11	WAIST	47	49	51	54	57	60	63	66	69	72	
GENDER: KIDS		VERIFIED BY: EDDIE				PATTERN CODE:			DATED: 21-Aug-2020			
Sr #	MEASUREMENTS IN CENTIMETERS	K2	K4	K6	K8	K10	K12	K14				
1	BACK LENGTH	45	48	51	55	57	60	63				
2	CHEST	38	40	42	44	46	48	50				
3	SLEEVE LENGTH (HPS)	54	56	58	61	64	67	69				
4	ARM HOLE	14	15	16	17	18	19	20				
5	BOTTOM (OPENING) RIB BELT	29	31	33	35	37	39	41				
6	CUFF (OPENING)	7.5	8	8	8.5	9	9.5	9.5				
7	BOTTOM RIB HEIGHT	6	6	6	6	6	6	6				
8	HOOD LENGTH	31	32	32	33	33	34	34				
9	HOOD WIDTH	23	23	24	24	25	25	25				
10	RIB + FABRIC BELT (OPENING)	33.5	35.5	37.5	39.5	41.5	43.5	45				

SOCKS

CREW CUT

	US FOOT SIZE	A		B		C	D	E	F
		INCH	CM	INCH	CM	CM	CM	CM	CM
S	3-5	9	22.5	8-9	18	3	8	3	9.5
M	6-8	9	22.5	9-10	20	3	8	3	9.5
L	9-11	9	22.5	10-12	22	3	8	3	10
XL	12-15	9	22.5	12-14	24	3	8	3	10

CREW CUT



FLOPPY HAT

ICON	FLOPPY HAT SIZE CHART						
	XX-SMALL	X-SMALL	SMALL	MEDIUM	LARGE	X-LARGE	XX-LARGE
HEAD SIZE (CM)	51	53	55	57	59	61	63